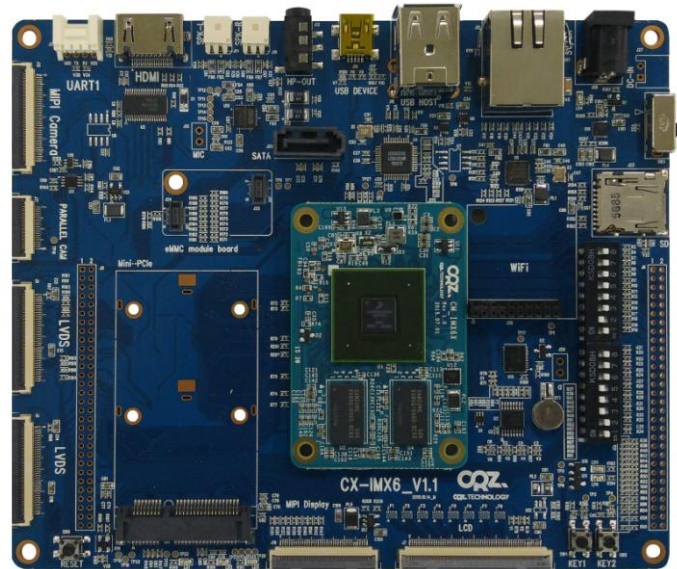


Quick Start Guide

CRZ.

CRZ. TECHNOLOGY



Mango-IMX6Q

About the Mango-IMX6Q

- **IMX 6Quad Processor 1Ghz**
- **2GB DDR3 SDRAM**
- **Connectivity**
 - Mini PCIe connector
 - SATA 22-pin connector
 - Micro SD/MMC card slots
 - 10/100/1000 Ethernet Port
 - eMMC 4.3 connector
- **Display**
 - MIPI DSI 지원
 - 2 x LVDS connectors
 - HDMI display interface connector
- **Audio : WM89026 Stereo audio codec**
- **USB Host 2.0 : 2 Port (Full Speed)**
- **Camera : Parallel x 1, MIPI x 1**
- **Power : DC-JACK 5V/1A**
- **Button : 2**
- **Boot Switch : 1**
- **LED indicator : 2**
- **Expansion connector (60x1) : EBI, UART, I2C, GPIO etc**

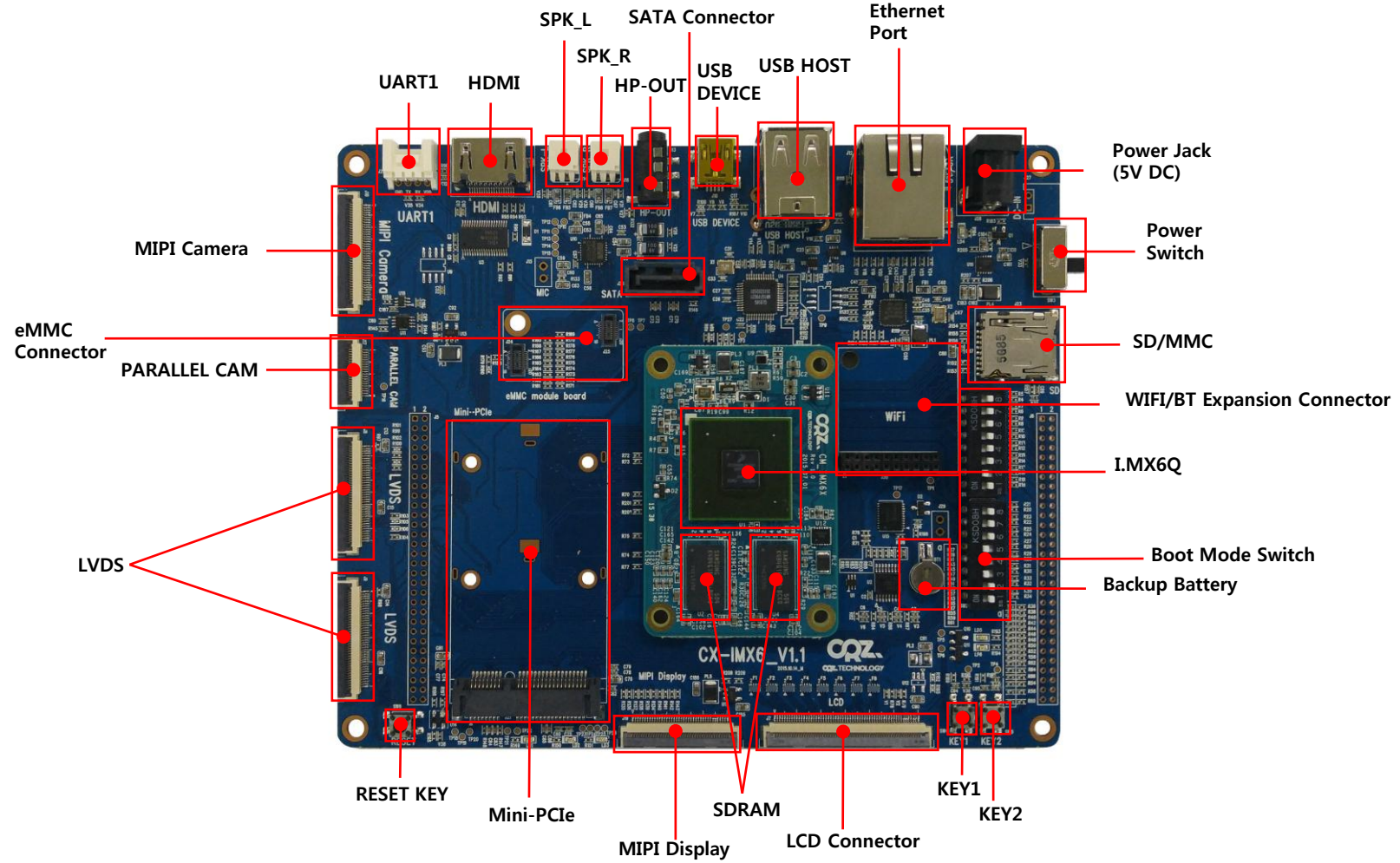


Getting Started

- ❖ Boards : Mango-IMX6Q Main Board, CA-U2S101_V1.1
- ❖ Cables : mini-usb Cable 2ea
- ❖ Power Supply : 5V /2A adapter
- ❖ Documentation : Quick Start Guide (this document)

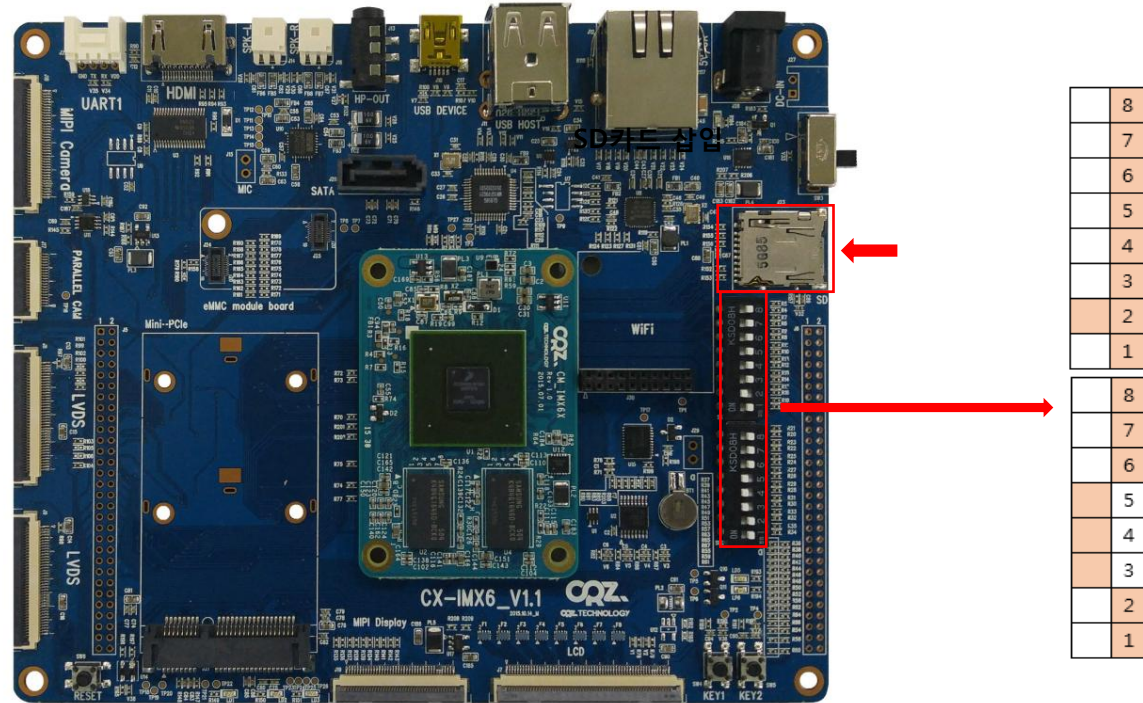


Get to Know the Mango-IMX6Q



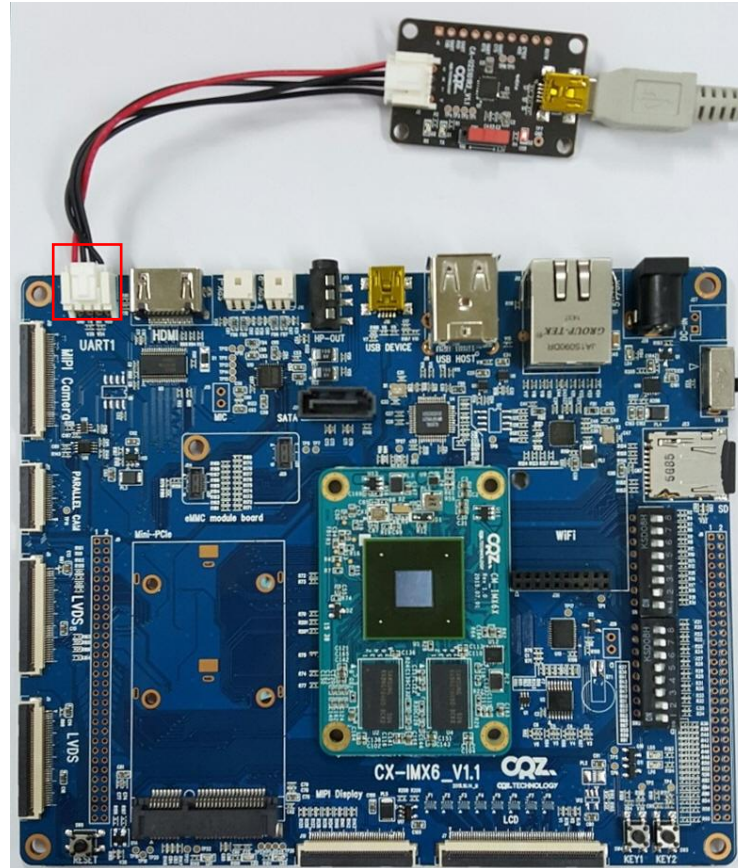
Setting up the Board

- 1 Mango-IMX6Q보드 Boot Switch를 설정하고, 부팅SD를 삽입한다.
SW1: 2 ON, SW2 : 3,4,5 ON



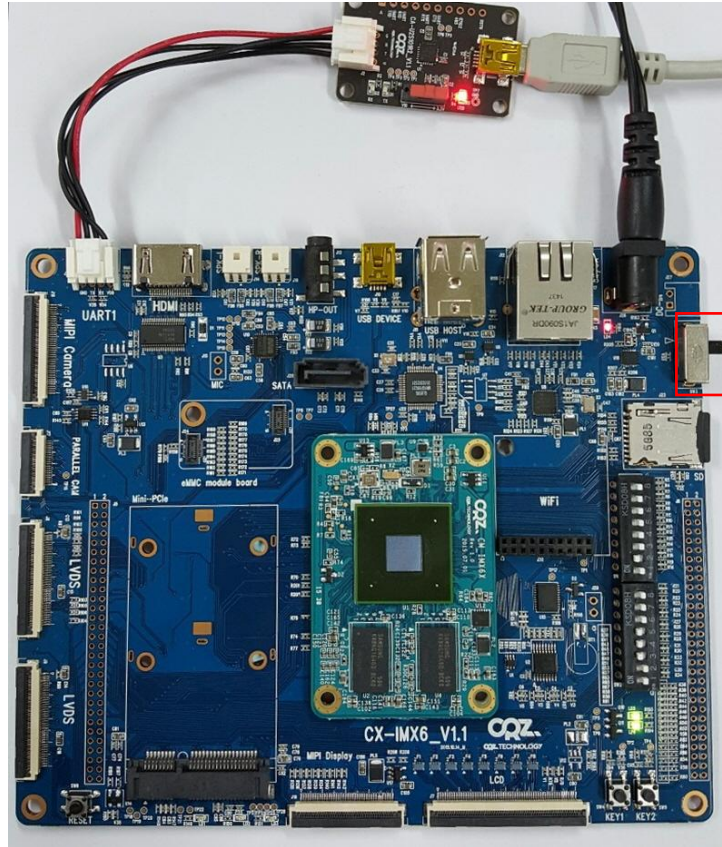
Setting up the Board

- 2 Mango-IMX6Q보드에 CA-U2S101모듈과 Mini USB Cable을 연결한다.



Setting up the Board

- 3** Power 연결
5V/2A 어댑터를 Mango-IMX6Q 보드에 연결합니다. 전원이 정상적으로 연결되면 Power LED가 켜집니다.



Setting up the Board

4

디버깅 메시지 확인

터미널 프로그램을 연결하여 다음과 같은 디버깅 메시지를 확인하면 정상동작을 하는 것입니다.

```
U-Boot 2015.04-imx_v2015.04_3.14.38_bul_ga+g5d63276 (Nov 03 2015 - 13:22:21)

CPU: Freescale i.MX6Q rev1.5 at 792 MHz
CPU: Temperature 30 C
Reset cause: POR
Board: MX6-SabreSD
I2C: ready
DRAM: 2 GiB
MMC: FSL_SDHC: 0, FSL_SDHC: 1, FSL_SDHC: 2
Display: Mango-INNO (1024x600)
In: serial
Out: serial
Err: serial
switch to partitions #0, OK
mmc2 is current device
Net: FEC [PRIME]
Error: FEC address not set.

Normal Boot
Hit any key to stop autoboot: 0
switch to partitions #0, OK
mmc2 is current device
reading boot.scr
** Unable to read file boot.scr **
reading zImage
6542328 bytes read in 345 ms (18.1 MiB/s)
Booting from mmc ...
reading imx6q-sabresd.dtb
43131 bytes read in 19 ms (2.2 MiB/s)
Kernel image @ 0x12000000 [ 0x000000 - 0x63d3f8 ]
## Flattened Device Tree blob at 18000000
   Booting using the fdt blob at 0x18000000
   Using Device Tree in place at 18000000, end 1800d87a
No PMIC found!

Starting kernel ...
```





For more information , visit
<http://www.mangoboard.com>
<http://cafe.naver.com/embeddedcrazyboys>